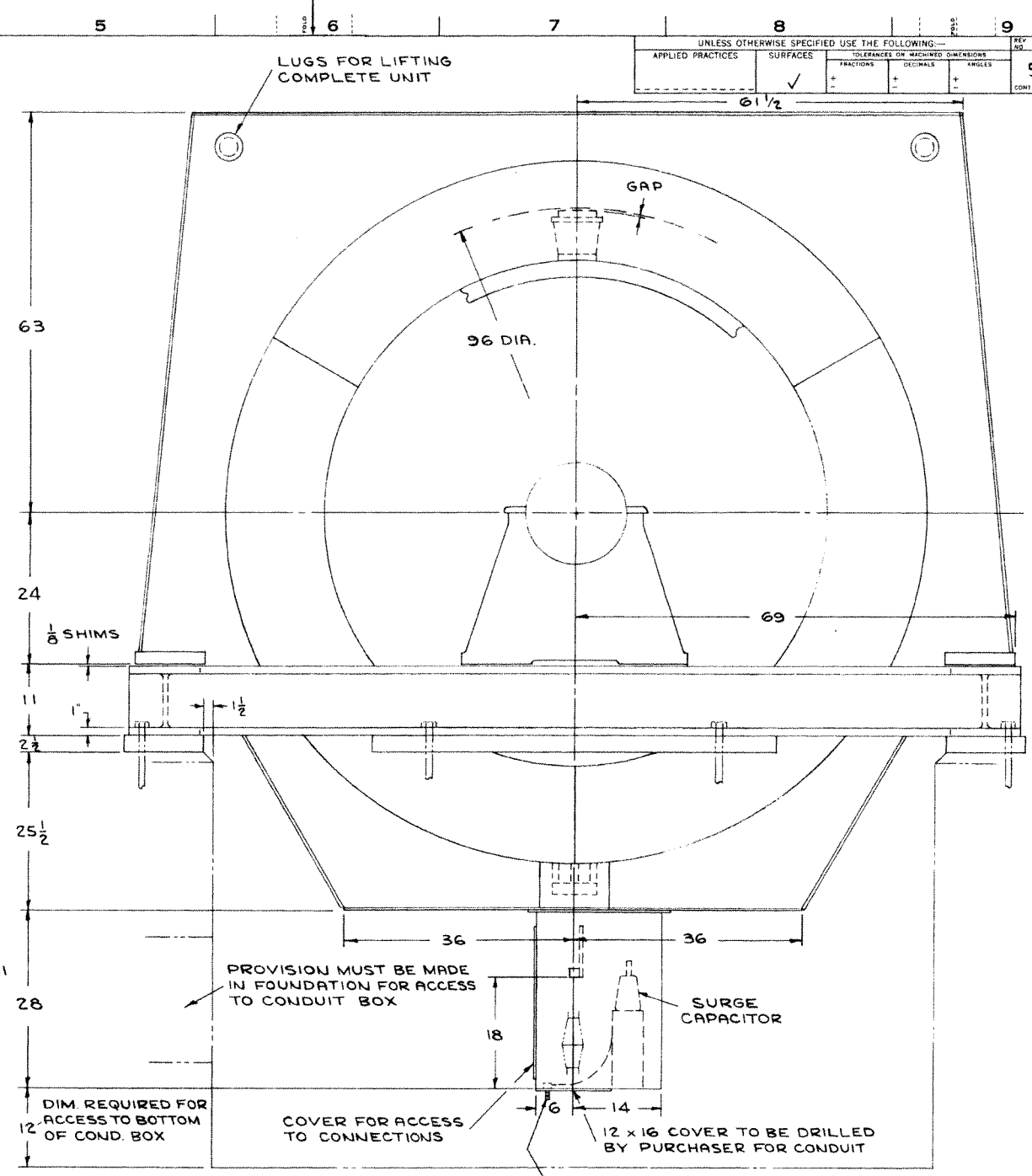
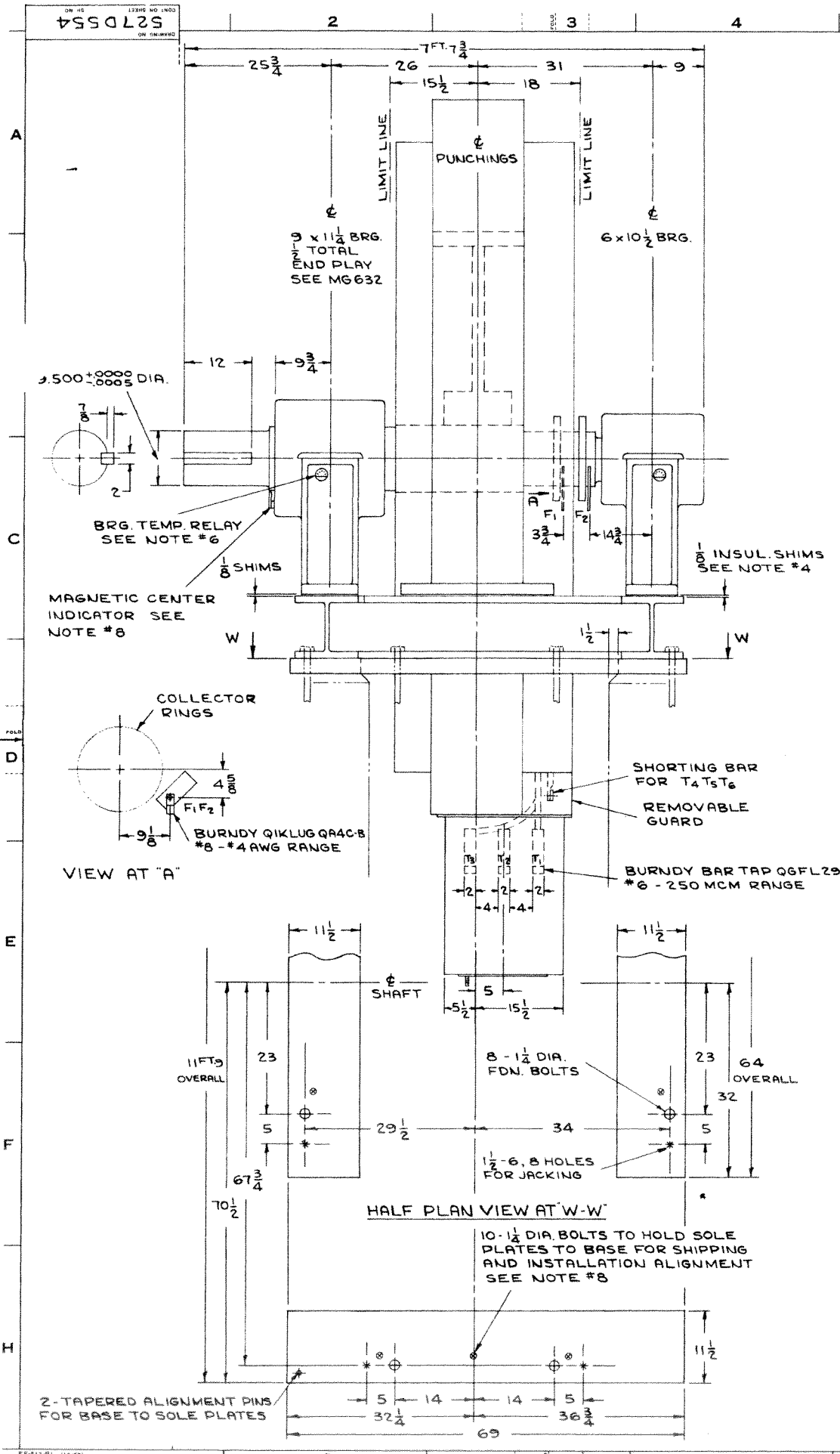


UNLESS OTHERWISE SPECIFIED USE THE FOLLOWING:			
APPLIED PRACTICES	SURFACES	TOLERANCES ON MACHINED DIMENSIONS	REV. NO.
	✓	FRACTIONS DECIMALS ANGLES	527D554
			CONT. ON SHEET

TITLE
OUTLINE
FIRST MADE FOR FRAME 6524-L



This document (including the information it contains) is confidential and proprietary to General Electric Canada and may not be used for purposes other than that for which it was originally intended. No part of it may be reproduced or transmitted in any form or by any means. Anyone in possession of this document will take reasonable steps to protect it and the information it contains.

EXPLANATORY NOTES

1. BASE IS NOT DESIGNED TO BE SELF-SUPPORTING. FOUNDATION MUST BE SO CONSTRUCTED AS TO PREVENT DEFLECTION.
2. PRELIMINARY FOUNDATION MUST BE SO CONSTRUCTED THAT A MIN. OF 1" IS OBTAINABLE ON BOTTOM AND SIDES OF SOLE PLATE FOR LINING UP. AFTER ALIGNMENT, SOLE PLATE IS TO BE GROUTED INTO MAIN FOUNDATION.
3. FOUNDATION BOLTS AND COUPLING NOT FURNISHED BY G.E. CO.
4. 6 x 10 1/2 BRG. PEDESTAL IS INSULATED FROM BASE. THIS INSULATION MUST BE MAINTAINED. SEE GEHT09
5. OIL CAPACITY OF BRG. PEDESTALS IS APPROX. 5 5/8 GAL. FOR 9 x 11 1/4 & 5 1/4 GAL. FOR 6 x 10 1/2
6. BEARING TEMP. RELAYS ARE FURNISHED. SEE GE1 70530
7. JACKING BOLTS ARE FURNISHED BY G.E. CO.
8. SUMMARY OF INTERCHANGEABILITY FEATURE SEE 131HA682

APPROXIMATE WEIGHTS

STATOR WITH SHIELDS	8500 LBS.
ROTOR WITH SHAFT	14,000
BEARINGS & PEDESTALS	2700
BASE	3700
SOLE PLATES	2200
TOTAL	31,100 LBS.

REVISIONS	PRINTS TO
1. CHG TO 4 PIECE SOLE PLATES, ADDED GEN. INF.	
APPROVALS	ISSUED
LARGE GEN. & MOT. DEPT. SCHENECTADY	527D554
DATE: Mar. 18, 65	AC